


# Did you know?

 Read these interesting facts about communities with a parent, carer or teacher.



A community is a group of people. We are all members of different communities including our family community, the school community and the local community.



In the local community there are lots of people who can help us. Including teachers, shop workers, doctors and the emergency services.



Friends from school and home can be part of your community.



The emergency services include police, firefighters, paramedics and rescue teams.




Every community has its own set of rules and ways to behave. It is important to follow the rules so that everyone can get along.

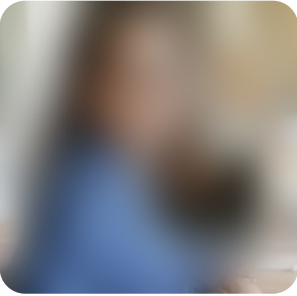


Families are all different sizes. Aunties, uncles, cousins and grandparents are family members.



# Key vocabulary

 Explore these words together. Talk with an adult about what each word means and use the words in a sentence or as you play.



auntie



community



cousin



doctor



emergency  
ser vices



family



firefighters



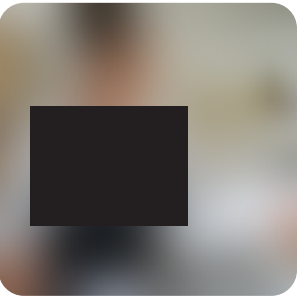
friend



grandparents



help



key workers



nurse



paramedics



police



rules



uncle

